

Castleconnell Flood Relief Scheme

Emerging Options Public Participation Day

Summary Report

November 2022



OPW Oifig na
nOibreacha Poiblí
Office of Public Works



Tionscadal Éireann
Project Ireland
2040



Comhairle Cathrach
& Contae **Luimnigh**

Limerick City
& County Council

JBA Project Manager

Jonathan Cooper
24 Grove Island
Corbally
Limerick

JBB Project Manager

Ronan Daly

Revision History

Revision Ref/Date	Amendments	Issued to
S3-P01/ 9 th November 2022	First Issue	Steering Group via SharePoint
S3-P02/23 rd August 2023	Names redacted for GDPR reasons	Steering Group via SharePoint

Contract

This report relates to the Castleconnell Flood Relief Scheme commissioned by Limerick City and County Council, on behalf of the Office of Public Works. Leanne Leonard and Jonathan Cooper of JBA Consulting carried out this work.

Prepared by Leanne Leonard BEng (Hons) MIEI
Engineer

Reviewed by Jonathan Cooper BEng MSc DipCD CEng
C.WEM C Dir F Inst D MICE MCIWEM MIEI
Managing Director

Purpose

This document has been prepared as a Final Report for the Design Team. JBA Consulting and J B Barry accept no responsibility or liability for any use that is made of this document other than by the Client for the purposes for which it was originally commissioned and prepared.

JBA Consulting and J B Barry have no liability regarding the use of this report except to Limerick City and County Council and the Office of Public Works.

Copyright

© JBA Consulting Engineers and Scientists Limited 2023.
© J B Barry and Partners Limited 2022.

Carbon Footprint

A printed copy of the main text in this document will result in a carbon footprint of 58g if 100% post-consumer recycled paper is used and 73g if primary-source paper is used. These figures assume the report is printed in black and white on A4 paper and in duplex.

JBA & JBB is aiming to reduce its per capita carbon emissions.

Contents

1	Introduction	1
1.1	Purpose of the Public Participation Day	1
1.2	Event Details	1
2	Promoting the Event	2
2.1	Overview	2
2.2	Means of promotion	2
3	On the day	4
3.1	Project Team Representation	4
3.2	Supporting Material	4
3.3	Attendance	5
3.4	Summary notes from discussions and queries raised on the day	5
4	Feedback Received	8
4.1	Questionnaire Analysis	8
4.2	Question 1	8
4.3	Question 2	8
4.4	Question 3	9
4.5	Question 4	11
4.6	Question 5	13
4.7	Question 6	13
4.8	Question 7	14
4.9	Question 8	14
4.10	Question 9	15
5	Summary of PPD	16
5.1	Practical Arrangements	16
5.2	Lessons Learnt	18
6	Register of Issues and Actions	19

1 Introduction

1.1 Purpose of the Public Participation Day

Effective communication with the locals in Castleconnell is vital given the frequency and magnitude of flooding in the village since 2009. Lack of engagement with residents could increase the risk of rejection of the scheme, or elements of the scheme, and lack of identification of key stakeholders could result in delays.

This is a key stage in the project to give those who will be living and working near the scheme the opportunity to share their views and opinions on the emerging options, any potential constraints to their implementation and any suggestions for changes.

1.2 Event Details

	<p>The purpose of the Public Participation Event was to present:</p> <ul style="list-style-type: none"> • the work carried out to date in developing flood maps • the surveys carried out to date • the measures that have been considered • how the measures have been grouped into options • the measures that have been discounted • the options which we would like to progress <p>The main aim was to seek feedback from the public and other interested parties in relation to the emerging scheme options.</p>
Venue	<p>Castle Oaks House Hotel, Castleconnell, Co. Limerick V94 EH94</p>
Date and Time	<p>Wednesday 21st September 2022</p> <p>12:00 – Set up by project team 14:30 – Presentation to Elected Representatives 16:00 – Open to the public 17:00 – Presentation to public 19:00 – Presentation to public 20:00 – Close</p>
Target Audience	<p>Any and all interested parties, including statutory stakeholders.</p>
Event Format	<p>The PPD was held as an in-person event to maximise public engagement.</p> <p>A pre-briefing was provided to invited elected members which was attended by just 1 nr. representative.</p> <p>Registration (host role) and one-to-one or small group discussions.</p> <p>Drop-in format, which included presentations by the project team at 5pm and 7pm.</p>

	<p>Posters displayed on display stands.</p> <p>Attendees were encouraged to fill out and return questionnaires on the day, although most opted not take them home.</p>
--	--

2 Promoting the Event

2.1 Overview

Promotion of any event is key to its success on the day. A variety of means of promoting/advertising were used to increase awareness of the day and aim to maximise attendance.

This event built upon connections made at the Early Engagement event, through site visits and contacts made over the course of the project.

2.2 Means of promotion

Direct contact	<p>All stakeholders, clubs and groups included in Appendix A.1 were emailed directly to notify them of the event.</p> <p>All respondents that provided contact details in the June 2020 PPD Questionnaire, were emailed directly to notify them of the event. Locals who had been in contact with the Steering Group up to the event were also emailed directly.</p> <p>Word of mouth was useful as the community is relatively small. This helped spread the message between people who had seen leaflets / posters and those who had not.</p>
Postal drop	<p>The company All Homes were contracted to distribute newsletters to a predefined catchment area (refer Appendix A.2) which included 975 nr. houses, 14 nr. apartments and 56 nr. commercial units within Castleconnell. The All Homes Completion Report is included in Appendix B.</p>
Local Authority Mechanisms	<p>A webpage for the PPD was set up on the Limerick City & County Council public consultation portal. Details of the event were published ahead of the PPD and all information presented on the day was uploaded following the event.</p> <p>(https://mypoint.limerick.ie/en/consultation/castleconnell-flood-relief-scheme-options-public-participation-day)</p> <p>A public notice was also published on the LCCC website (https://www.limerick.ie/council/newsroom/public-notices/public-notice-castleconnell-flood-relief-scheme)</p>
Media Campaign	<p>A press release was issued to the Limerick Leader and the Irish Examiner in the form of a public notice.</p> <p>Articles were also posted on the following websites:</p> <ul style="list-style-type: none"> • Limerick Leader (https://www.limerickleader.ie/news/home/914880/open-day-on-limerick-village-s-flood-relief-scheme.html) • Limerick Post

	<p>(https://www.limerickpost.ie/2022/09/18/castleconnell-residents-urged-to-attend-flood-relief-scheme-update/)</p> <ul style="list-style-type: none"> • Nenagh Guardian (https://www.nenaghguardian.ie/2022/09/19/meeting-on-mid-west-flood-relief-scheme/) •
Social Media	<p>The PPD was advertised on the below social media pages:</p> <ul style="list-style-type: none"> • OPW Facebook Page • OPW Instagram Page • Limerick Leader Facebook Page • Kieran O'Donnell Facebook Page <p>- Shared by Castleconnell Tidy Towns, Mike Murphy TD and 4 others (anonymous)</p>
Poster Campaign	<p>Posters were distributed to:</p> <ul style="list-style-type: none"> • Tom Maher's Pub • Shannon Stores • Shannon House Restaurant • SuperValu Castleconnell • Green Cross Pharmacy • Daybreak Daly's Cross • Bradshaw's Bar • McDermott's Butchers <p>Remaining businesses in the village were not open at the time of distribution.</p>

Attendees reported hearing about the event from a range of sources including newspapers, word of mouth and newsletters through the door.

3 On the day

3.1 Project Team Representation

There were 9 nr. representatives from the Steering Group on the day (3 nr. from Limerick City & County Council, 2 nr. from OPW, 3 nr. from JBA Consulting and 1 nr. from JB Barry & Partners).

3.2 Supporting Material

The following materials were available on the day:

- GDPR compliant sign in book.
- 60 nr. printed questionnaires – On arrival each attendee was encouraged to fill in a questionnaire and return it before leaving. All questionnaires were distributed on the night.
- A series of posters were displayed which covered the following topics:
 - Welcome Poster
 - Project Introduction
 - Water & Aquatic Ecology
 - Water Quality
 - Bats
 - Birds
 - Habitats
 - Archaeology & Cultural Heritage
 - Ecological Constraints
 - Conveyance Measures Considered
 - Flood Extent Map
 - Option 1 Overview
 - Option 2 Overview
 - Option 3 Overview
 - Rivergrove B&B – All Options
 - Grange House – All Options
 - Mall House – Options 1 & 3
 - Mall House – Option 2
 - The Mall Road Section A – Options 1 & 3
 - The Mall Road Section A – Option 2
 - The Mall Road Section B – Option 1
 - The Mall Road Section B – Option 2
 - The Mall Road Section B – Option 3
 - Meadowbrook & Stormont House – All Options
 - Coolbane Woods Junction – All Options
 - Diversion Routes for Road Closures
 - Opportunities to Take Part

3.3 Attendance

63 nr. attendees were recorded on the sign in sheet with several more in attendance who did not sign in.

7 nr. questionnaires were returned on the night, 3 nr. were returned via post and 2nr. via email.

Both presentations were well attended with the 5pm slot being more popular.



Figure 3-1: Attendance at 5pm presentation



Figure 3-2: Attendance at 7pm presentation

3.4 Summary notes from discussions and queries raised on the day

- Cultural heritage is of utmost importance and the scheme should respect this. Attendees were pleased to hear that it is intended that the stone from the existing walls can be used to clad the new flood walls so that the final look and feel will be similar to the existing scenario.
- Some attendees queried what the defences would look like and noted that examples would help them visualise the proposed scheme, particularly examples within Ireland that they could view in person.

- One attendee raised a query during the first presentation to the public, which expanded to a lengthy discussion lasting c. 30-45mins. The individual in question advised that he has been keeping ESB records for many years and has done modelling and reporting on Parteen Basin. They expressed their opinions regarding the operation of Parteen Basin, particularly in relation to the maximum and minimum water levels in the basin. The Steering Group advised that they have worked with ESB but that the individual's observations would be reviewed in due course. Contact details were taken and a follow up meeting will take place.
- It was queried whether the scheme is at risk if ESB do not co-operate as the scheme will depend on a set abstraction to Ardnacrusha. The Steering Group responded that an assessment into the flow through Ardnacrusha had been undertaken, which takes into account past instances where turbines have been unavailable.
- It was suggested that ESB are primarily responsible for the flooding of Castleconnell due to mismanagement of Parteen Basin and that the scheme would be pointless if ESB do not co-operate. It was then queried whether ESB would fund the scheme to which the Steering Group responded that OPW would be funding the scheme. The individual then suggested that means that the taxpayer will ultimately be paying for it.
- It was suggested that Ardnacrusha Power Station is now centrally controlled from Poulaphouca, which could be leading to problems around day-to-day operations, such as relying on sensors instead of personnel.
- It was noted that the flooding in Meadowbrook was through drains and queried how this will be prevented. The Steering Group responded that non-return valves would be fitted to all outfalls and sump pumps would be utilised for surface water in select locations.
- A resident of Meadowbrook Estate noted that they felt that the existing wall helped to ease flooding in previous events and noted their concern with providing a gated opening. The Steering Group explained that the northern section of the wall would be replaced and the proposed gateway would be situated behind a proposed embankment preventing a flow path to the village. It was further explained that this gate would be for maintenance of the embankment and for emergency access to the residents of Stormont House during a flood event only.
- It was suggested that the laneway from the soccer pitch to the Mall Road acts as a flow path during heavy rain, which may be a concern during a flood event if it cannot discharge to the River Shanon.
- There was a misunderstanding surrounding the proposals for Rivergrove B&B where one local was concerned about flooding of the property through the existing entrance. It was explained that it is proposed to relocate the driveway above the flood level and to provide a flood wall at the location of the existing entrance.
- The Steering Group were questioned about the certainty that all three options presented would work. It was explained that all three are technically viable but that some uncertainty remains around the demountable barriers.
- The appearance of the proposed embankments was queried to which the Steering Group explained that they would be grassed and periodically cut and inspected to visually assess their condition.
- One attendee queried the cost difference between the Option 3 and Option 1, noting that a significant amount of money would be spent in Option 1 to provide access for just one family. It was suggested that Option 2 would provide access for many more families, for a similar cost.

- One attendee asked to make three points:
 - He felt that the ESB issue regarding management of Parteen Basin should be investigated as part of the scheme.
 - He thanked the project team for the high standard of information presented and noted his appreciation.
 - He accepted that the cost benefit is a challenge but implored Limerick City & County Council to preserve the heritage and beauty of the village by balancing function with aesthetics. He requested that any proposed works should not have the same appearance as the pointing carried out by Limerick City & County Council to the Mall Road last year. LCCC accepted that the pointing job was not in-keeping with the existing wall and promised that a specialist would be appointed as part of the scheme.
- One attendee wished to note that while the environment is important, it should not be put ahead of protecting humans.
- It was queried whether the flood maps produced as part of the scheme would replace the CFRAMS mapping. The Steering Group advised that once published, the scheme mapping would supersede the CFRAMS mapping in the scheme area.
- A homeowner queried whether the scheme would allow them to receive flood insurance. It was explained that this would most likely be on a case-by-case basis and that the OPW are in ongoing discussions with insurance companies regarding this.

4 Feedback Received

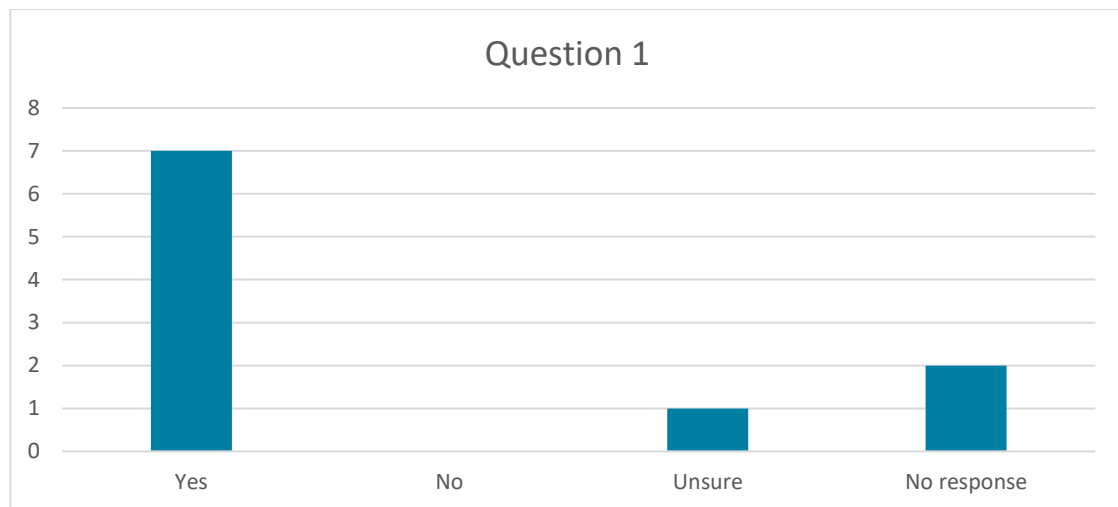
4.1 Questionnaire Analysis

Questionnaires were requested to be returned by 19th October, allowing four weeks for the public to complete them. There were 12 nr. questionnaires returned in total, although 60 nr. were distributed on the day and they were also made available on the project website following the event.

The responses to the various questions are summarised below.

4.2 Question 1

Do the flood maps represent the scale of flooding you have experienced? Please also review the Cedarwood and Stradbally Streams.



The following comments were also received:

- The Cedarwood suffered a flood 25 years ago and flooded an internal roadway. Such flooding has not been experienced since.
- Pictures of the 2009 floods between Coolbane/Castlerock and Stradbally North would be of particular interest to me and the Stradbally North Residents Association.
- Never saw the Cedarwood Stream as an issue. The Stradbally Stream can raise backing up to Belmont Road and causing high water around [Coolbane] Woods.
- Too difficult to follow the graphics.
- ESB [Parteen] Weir and amount of water let off flooding Annacotty and Mountshannon Rd.

4.3 Question 2

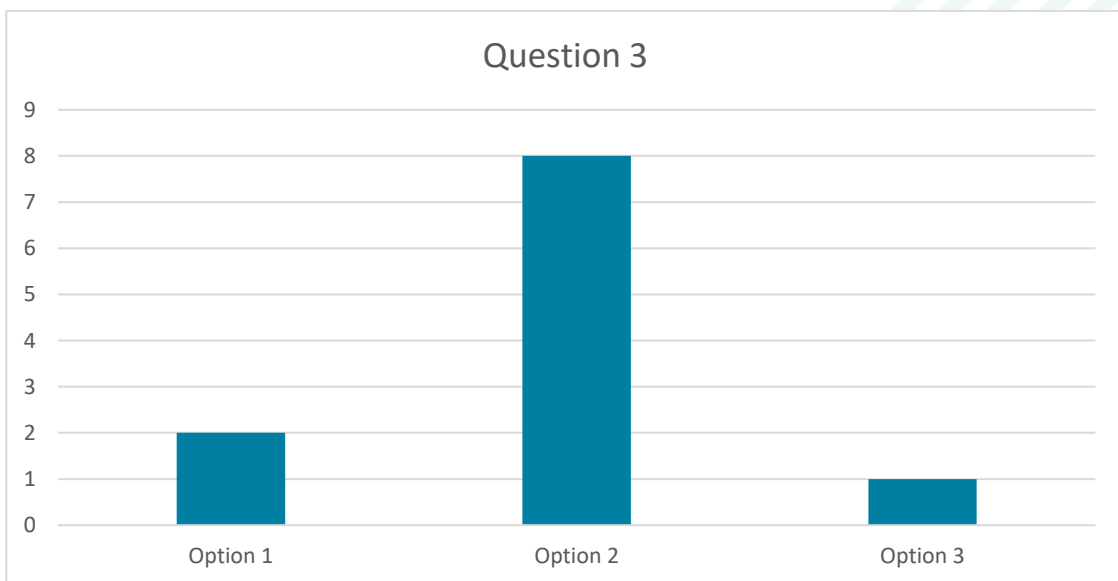
Are there any additional measures that you think should have been considered? (Please provide reasons for your answer)

- Flood defences should have been in place a number of years ago! ESB carry a good share of responsibility for safety of homeowners.
- Serious discussions needed with ESB re actions they take or should take when flood threats emerge!
- ESB level Killaloe.

- I don't see any mention of mitigation of present in-river obstructions, which may not solve the entire flooding problem but must be of benefit. Bear in mind that the present channel used to accommodate almost twice the flow under flood conditions. Specifically we are talking about removing a small number of mostly Sycamore trees on man-made structures and lowering 2 or possibly 3 stone weirs.
- I'm sure that you have consulted with the ESB, particularly at Parteen Weir, who are responsible for regulating flow of water downstream. ESB needs to 'up their game' dramatically when fulfilling their statutory obligations in this area.
- Raising car park and road from bottom Chapel Hill to village supermarket. Commuter village from/to Limerick so car access/ambulance/fire vital.
- More discussion with ESB about their role in easing the flood problems.
- Some consideration to the O'Briens Bridge Road. Connection between Montpelier and Castleconnell blocked under the railway bridge.
- Yes raised land on site 0.3A (where creche to be built) – see figures 3.6 & 3.7 on FRA document on Planning Permission file No 19518 (Castlerock). See Sect 2.1 FRA Doc – "Ground levels appear to have been raised in recent past by infill". The site area here was raised by infill by more than 6 feet. This will impact on flood waters coming up carpark stream to this area. Have you taken this into account and if so what provisions are planned to prevent flooding of Stradbally North due to this raised ground on development (Castlerock) Torca site?
- In 1927 the Germans laid the headrace embankment. It was dressed in concrete plate. In 100 years - No maintenance. In 2022 the embankment will be covered in grass – mowed and regularly maintained in its virgin state at what cost.

4.4 Question 3

Which option would you select as your preferred option? (Please provide reasons for your answer)



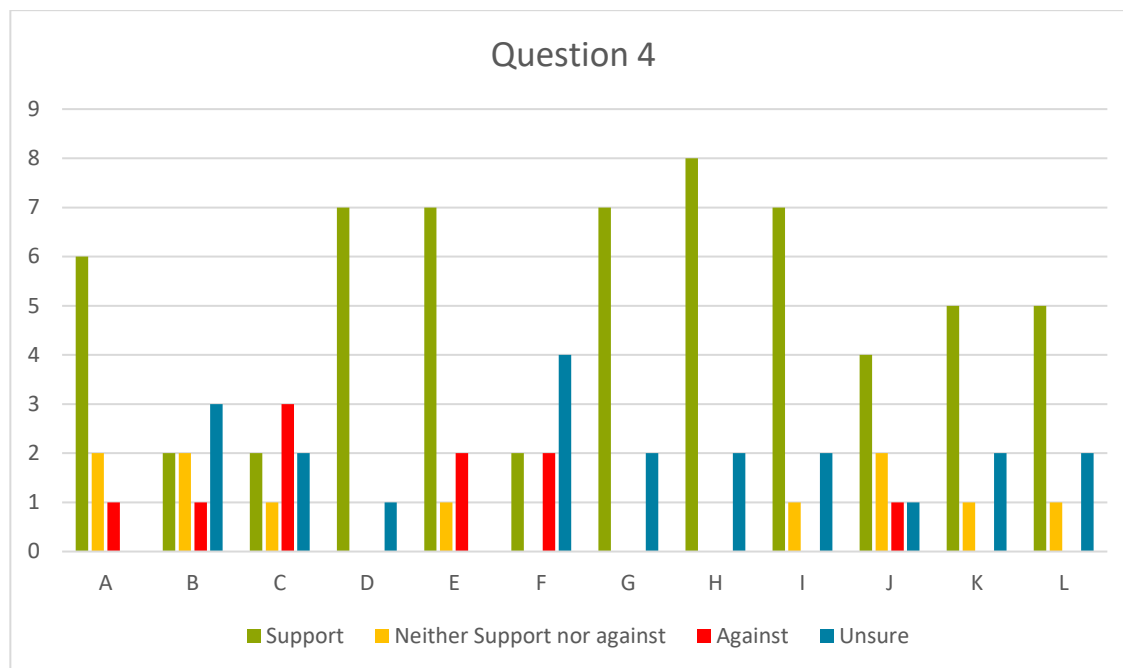
- Existing wall along Mall is not sufficient to hold out flood water. Option 2 offers best defence for village from Rivergrove B7B to ferry car park. It is critical that ESB input on their flood management at Parteen Weir be sought and included in your plan. Will this happen?

- The Mall Road offers an important access/exit for the village.
- Moving entrance at B&B very good.
- **[Name removed]** "Rose Cottage", **[Mall]** House totally enclosed – Thank you.
- Victorian flood wall breached "water poured in". Unoccupied for two years – Sold on.
- Effective future flood protection of property and road access in/out of village 24/7.
- **[Illegible]** need for emergency measures & costs to be stood up/stood down every year.
- Remove insurance "Blight" policy on house.
- Village is zoned for housing & development – difficult to get house insurance with repeat flooding.
- Completely against Option 2.
- Option 3 seems to represent the best balance between effectiveness, cost and **[illegible]** and impact on local **[illegible]** and environment.
- Not fully sure on this one. Personally whichever measures offer Meadowbrook the optimum and most long term solution would be preferable. We like the idea of isolating Cloon Stream.
- Secures protection for my home (Option 2).
- Options 2 or 3 preferred – low impact to Island House site.
- We do not support Option 1 because of impact to Island House site, i.e. the raising of the causeway and the intrusion of the cut-off structure into woods.

The response to Question 3 indicates a strong desire for the selection of Option 2 as the preferred option.

4.5 Question 4

We have shown you the emerging options for providing flood relief to Castleconnell. Please use the boxes below to indicate your opinion on the various elements of the options. Please add any options you believe should be considered in the blank rows at the bottom of the table. (Please tick appropriate boxes) (See attached maps for reference locations)



Map Ref.	Proposed Defences	Comments Received
A	New set-back flood wall along Mall Road	Feel best that it is done at this time. No need for it, and the existing wall is vital part of CC.
B	Traffic diversion system to close access at the Scanlon Park junction.	93 homes affected. Relies on emergency services and budget re costs every year. Surely very temporary if necessary.
C	Replacement of the Island House causeway.	Not sure how necessary this measure is. Vital part of heritage & no need. Impact to Island House site.
D	Demountable barrier across the Island House entrance.	As long as it doesn't drive water towards the village. Not necessary unless road is breached. Will need warning to leave site.
E	New set back flood wall between Island House and Maher's Pub.	If deemed necessary Totally unnecessary. Absolutely vital part of heritage.

F	Embankment across Cloon Stream.	"Across"? Impact to Island House site.
G	New flood wall in the Maher's Pub car park.	
H	Flood wall from Maher's Pub to Meadowbrook Estate.	To keep water from the rear of those properties.
I	Embankment from Meadowbrook Estate to Stormont House.	Not sure if Stormont floods. Allow the land to flood.
J	Traffic diversion system to close access at the Chapel Hill Road.	Would be acceptable during a flood event. Relies on emergency services being available. V. occasionally necessary. Or could raise part of road?
K	Embankment to the rear of Coolbane Woods.	Can some sort of non return valve be fitted to Stradbally Stream.
L	Maintenance & improvement of conveyance on Cedarwood Stream.	The current stream is ruined by development including the culvert 2 house development. Stream is wildlife habitat.

The responses to Question 4 showed strong support for the set-back flood wall along the Mall Road, demountable barrier across Island House, set-back flood wall between Island House and Maher's Pub, flood wall in Maher's Pub car park, flood wall from Maher's Pub to Meadowbrook Estate, Embankment from Meadowbrook Estate to Stormont House, embankment to the rear of Coolbane Woods and maintenance of the Cedarwood Stream.

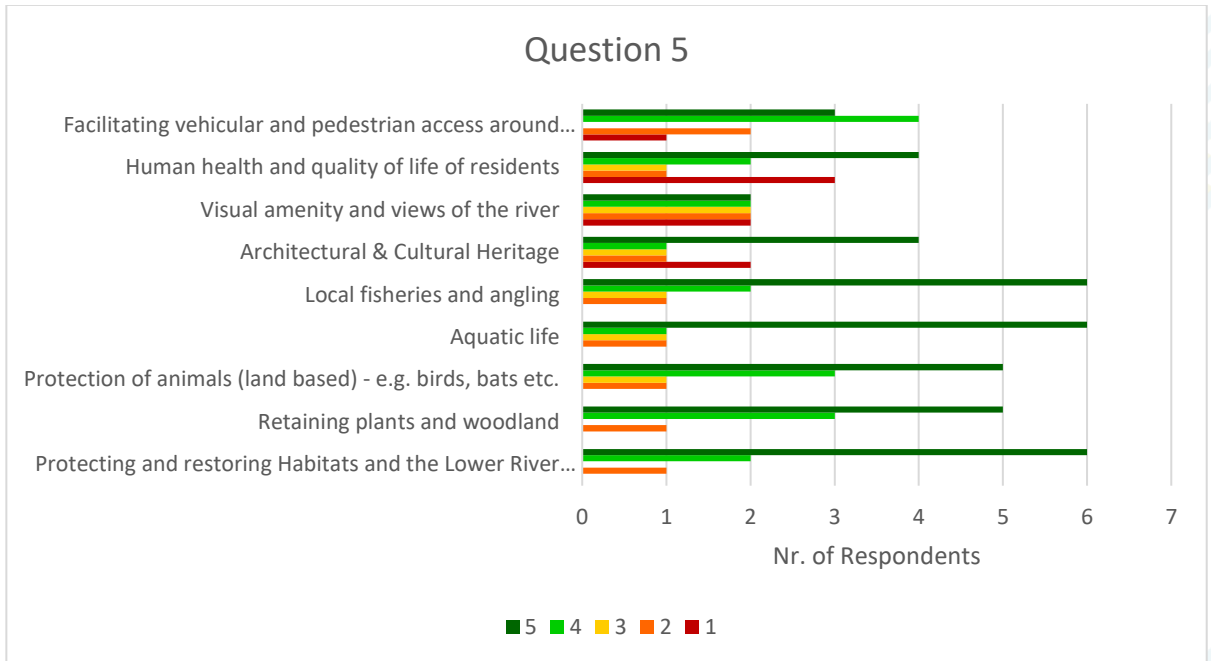
Of those that responded, the majority were against replacement of the Island House causeway and unsure about the proposed downstream cut-off embankment across Cloon Stream.

Respondents were also unsure about the traffic diversion at the Scanlon Park junction.

All of the above closely aligns with Option 2 and reinforces the desire from the public for protection of the Mall Road.

4.6 Question 5

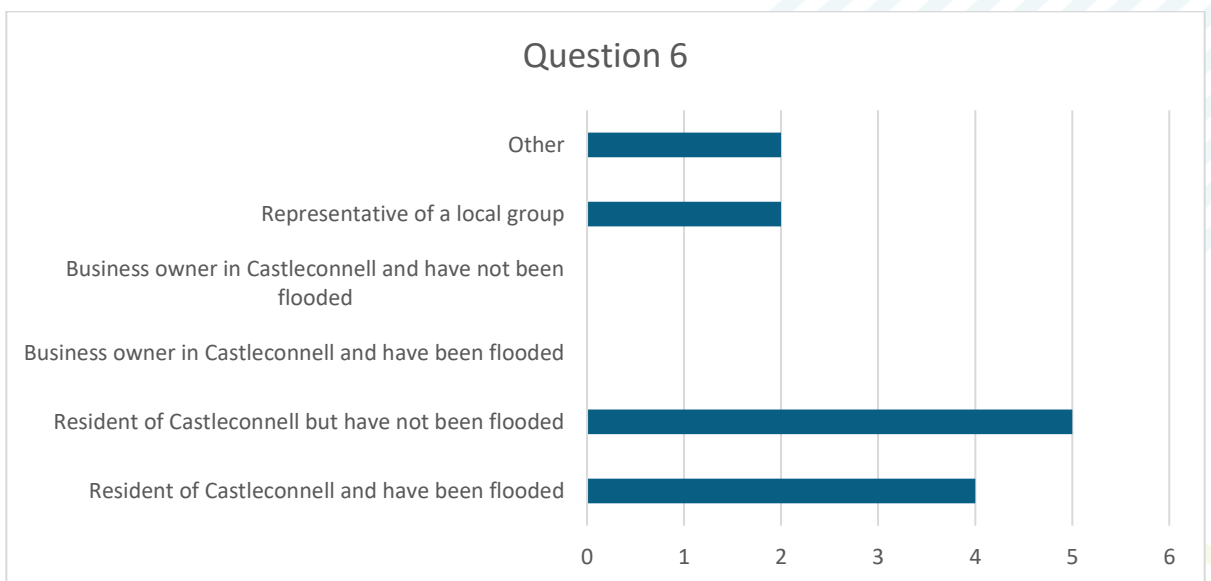
In the assessment of the options rank 1-5 the weight you would give to each of these issues.



The strongest weightings were given to Local fisheries and angling, aquatic life, protection of animals (land based), retaining plants and woodland and protecting and restoring habitats and the lower River Shannon SAC. This would suggest that the locals are concerned about the environment and the effect the scheme may have on it.

4.7 Question 6

Please indicate which best describes you. (Select as many as apply)



Representatives from the following Local Groups responded to the questionnaire:

- Stradbally North Residents Association
- Castleconnell River Association
- Castleconnell River Association (Formerly Castleconnell Fishery Association)

4.8 Question 7

How did you hear about today’s event?

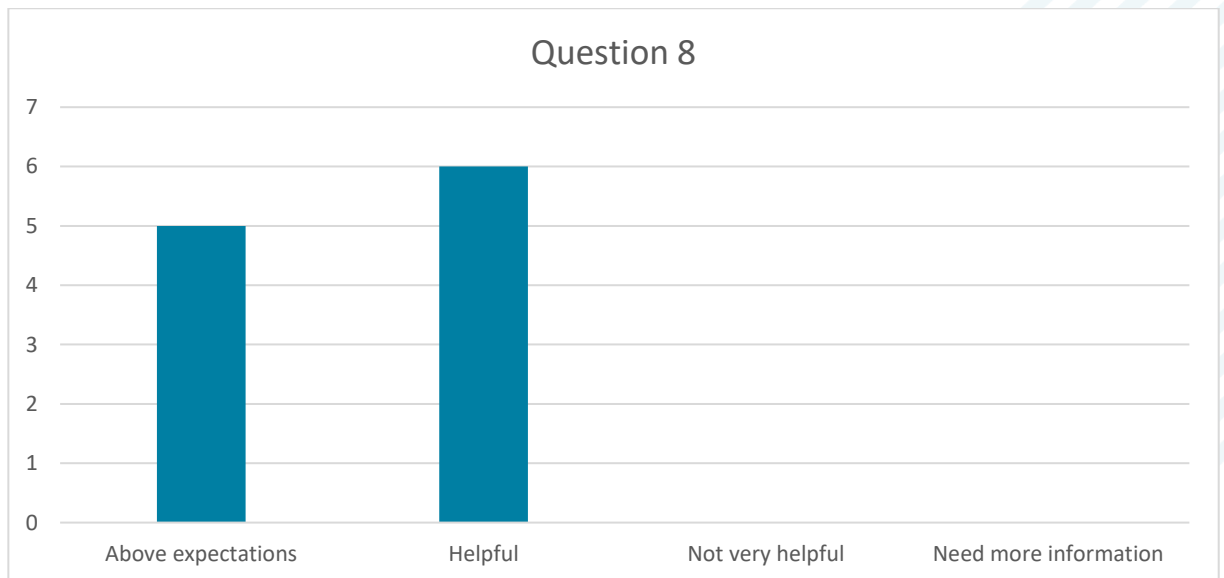
Respondents noted the following means of hearing about the PPD:

- Newsletter
- Word of mouth/Newsletter passed on by neighbour
- Limerick Leader
- Notice in village post office
- Direct invitation by either email or phone call
- Radio (Note: Radio advertising not organised by Steering Group)

Some attendees reported not receiving a newsletter. All Homes were queried on this and provided their completion report which shows that all properties within the catchment area received a newsletter.

4.9 Question 8

How useful have you found this event in understanding the project and how you can feed into the process?



In addition to the questionnaire, many attendees praised the project team on the night for the level of detail presented.

4.10 Question 9

If there is anything else you would like to add, please use the space below.

- Congratulations on the meeting. Thanks to Chariman & lady speaker. Brilliant mapping and floor layout. (Response provided to Q1 but more suited to Q9)
- Session needed to be managed better as some people were allowed to dominate/take-over the presentation. Suggest using a moderator/event manager in future.
- A good start but critical to get finished as soon as possible.
- We need a political process/campaign to have proper flow control from ESB. If this could be achieved it would reduce the cost and complexity of Castleconnell Flood Protection. Cost to ESB almost nil.
- Approx 6 areas of interest. Expanded view appreciated. I misunderstood area of B&B. I now see you're moving entrance, very good.
- I, as others, walk daily to the Worlds End. At the time of last major flood drivers in SUV drove regularly causing heavy water to swirl and drown the footwear of walkers.
- You have done a very thorough job in presenting the options. Thank you.
- Further to response to Q2 (regarding in-river obstructions), bear in mind the existence of multi-agency Shannon Connectivity Project, currently at draft report stage, especially from point of view of cross-river weirs and flow regime, which may eventually affect tree growth.
- Where will all flood water go after Castleconnell Flood Relief done in Clonlara Castleconnell?
- As earlier, **[name removed]** was very animated and clear that his monitoring & findings should be seriously considered. Thank you for pursuing this and please continue with all speed.
- Protection measures for homeowners to be put in place as quickly as possible, especially for elderly people. Hopefully offering peace of mind and reduced anxiety during winter months.

5 Summary of PPD

5.1 Practical Arrangements

When attendees entered the room they were greeted, asked to sign in and encouraged to take, fill-out and return a questionnaire before leaving (Refer Figure 5-1). Two large display stands were hired from a company called Creo. Because lighting was poor at the rear of the room, it was decided to use the larger stand only and to attach posters to both sides. This allowed attendees to move around the stand to examine the posters and brought them into the presentation area (Refer Figure 5-1 and Figure 5-3).

The slideshow for the presentation was shown on a television as there was no projector in the room (Refer Figure 5-2). However, the slides could be seen clearly from the back row of the audience.

The venue size was appropriate and the facilities available were suitable. For all of the reasons above in addition to the proximity of the venue to the scheme, it would be preferred for future Public Participation Days.

The event was widely advertised, with the mail drop and word of mouth appearing to be the most successful means of advertising.



Figure 5-1: Sign-in area upon entry with display stand behind



Figure 5-2: Presentation area



Figure 5-3: View facing the other side of the display stand.

5.2 Lessons Learnt

- Questionnaires were filled out by just 6 nr. attendees on the day despite being most attendees getting one and being encouraged to return them prior to leaving. This led to a low return of completed questionnaires. A place within Castleconnell where questionnaires could be submitted may have helped. Potentially look into a digital survey in the future to prevent the need for attendees to post / scan and email questionnaires if they're not going to fill out on the day. Although the digital survey was considered for this event, it was difficult to achieve given the format of the questions.
- There was very little attendance at the briefing to Councillors with just 1 Councillor in attendance. Consideration could be given to other events/meetings that may clash. Both the Ploughing Championships and a Oireachtas Committee Meeting were also held on 21st September which prohibited some Councillors from attending.
- There was insufficient time for the Steering Group to review the posters ahead of being sent to the printers. This was partly due to the delayed finalisation and agreement by OPW/LCCC of options to be presented on 7th September, just two weeks ahead of the PPD. A more complicated suite of Options was suggested by the SG, which was not appropriate for an emerging preferred event. This took time to resolve and put the team under pressure to be ready for the event. For future events, the 6-week lead-in should be started on a position of clarity regarding the options and key messages. Draft posters should also be issued to the Steering Group for review, as they become available instead of waiting to issue as a package.
- Despite the above, the public were happy with the material presented with many attendees on the night expressing their appreciation for the level of detail presented. This was also reflected in the questionnaires where all respondents indicated that they found the event either 'helpful' or 'above expectations'.
- Maps showed the proposed defence alignments and footprints as coloured polylines/outlines on an aerial background, along with modelled flood levels and proposed defence levels. Sections through key locations were also included indicating existing ground levels, proposed defence levels and proposed defence heights. This level of detail was considered appropriate for this stage of the project (Emerging Options Stage).
- The discussion that took place regarding ESB operation of Parteen Weir during the first presentation lasted c. 30-40mins. Although the Steering Group expected some queries on this topic, it was not reasonable to expect the extent at which the individual wished to discuss it. The presenter made many attempts to resume the presentation, most of which were interrupted by further discussion on the topic. While the Steering Group were happy to facilitate such a conversation, it should have taken place separately with those interested, following the presentation. The individual also made some accusations towards ESB that were not shut down as they should have been. For future events, the Steering Group should prepare for a repeat occurrence. The person should be asked to refrain from making accusations towards those not there to defend themselves. If a question turns into a lengthy discussion, the Steering Group should ask the individual to withhold any further comments until after the presentation. If the individual is not willing to wait, another member of the Steering Group should take them to the side to discuss the matter privately so as not to disturb others.
- Both public presentations were well attended, with the 5pm slot being more popular.

6 Register of Issues and Actions

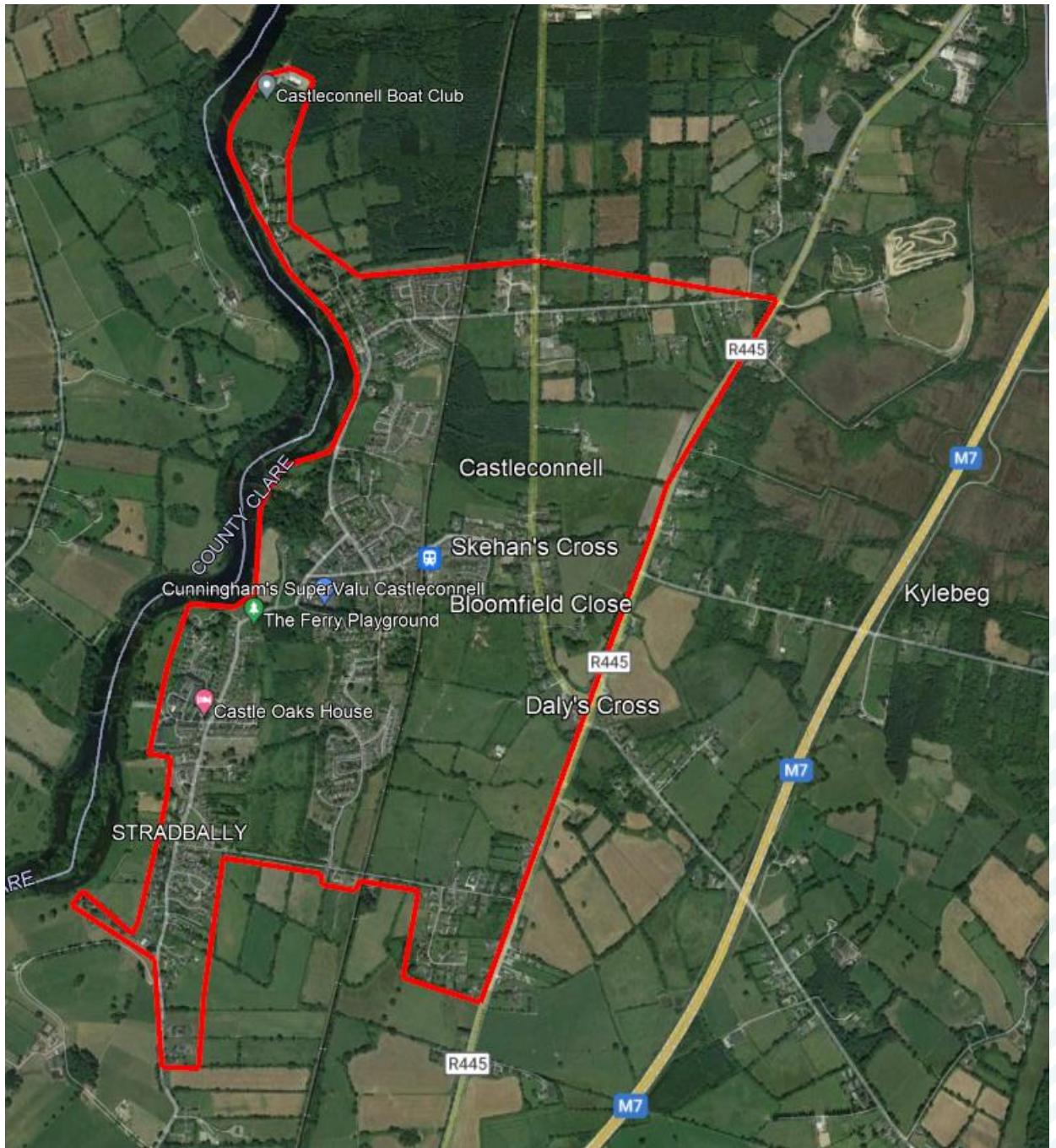
Action	Action By	Completed
Give consideration to removing a small number of mostly Sycamore trees on man made structures and lowering 2-3 stone weirs.	OPW	
Arrange a meeting between the Steering Group and the individual that raised the concerns regarding operation of Parteen Basin.	LCCC	

A Appendix A –Direct Notification

A.1 Stakeholders notified about the PPD

- ESB - Declan Quille (Operations Manager at Ardnacrusha)
- Councillors Metropolitan District
- Road Design Office - Greenway Project
- Darragh Corcoran - LCCC Area Engineer
- Statutory Consultees:
 - NPWS (DAU)
 - IFI
 - An Taisce
 - Environmental Protection Agency
 - National Monument Service (DAU)
- ACM Community Development Society/Castleconnell Development Association
- Castleconnell Boat Club
- Love Castleconnell Group
- National Governing Body of Sport Canoeing Ireland
- Kilfinane Outdoor Education and Training Centre
- Limerick Kayak Club
- Limerick Kayaking Academy
- Limerick Kayak Club Juniors
- Castleconnell River Association (Formerly Castleconnell Fisheries Association)

A.2 Catchment area of properties that received a newsletter



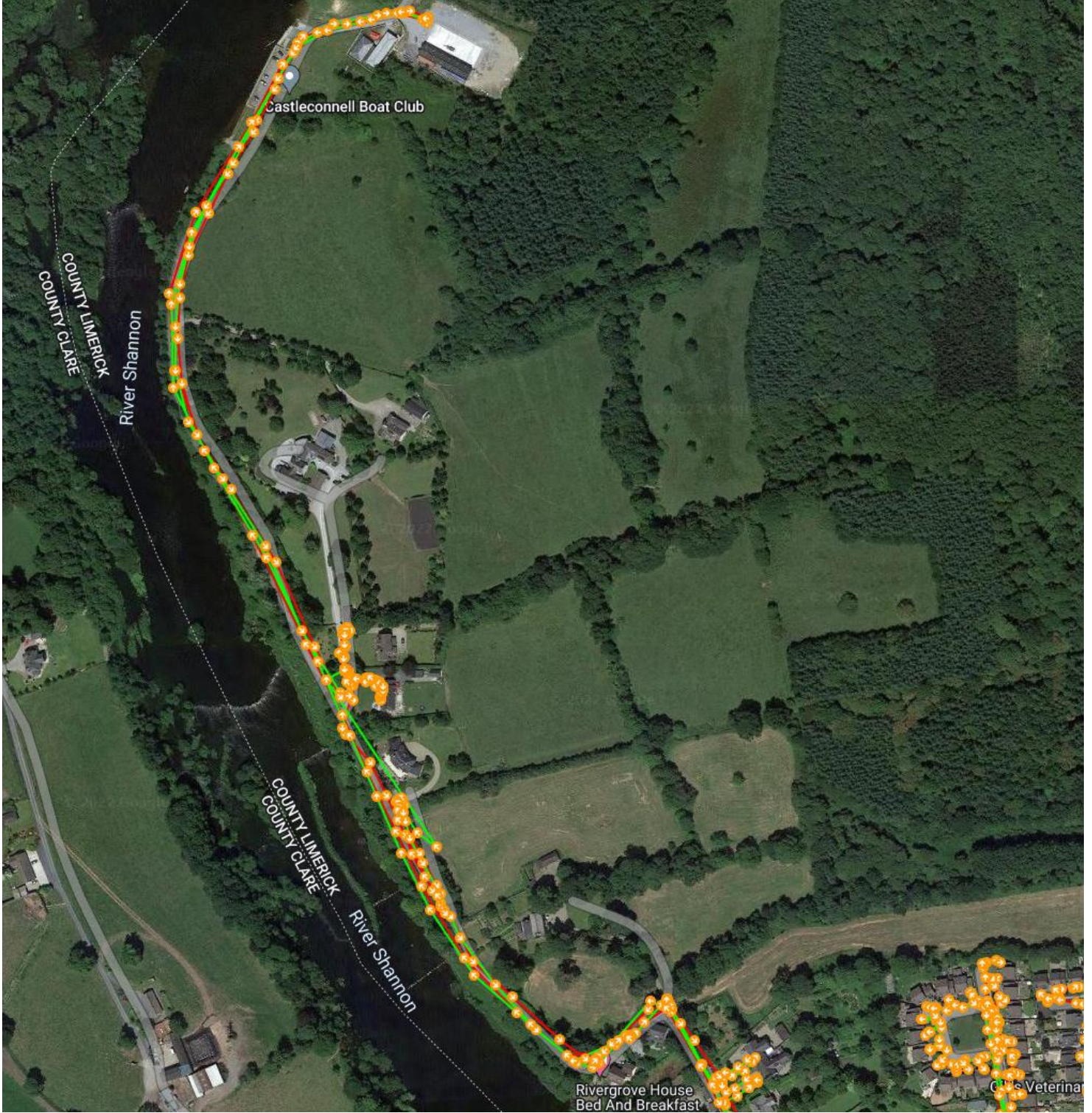
B Appendix B – All Homes Order Completion Report

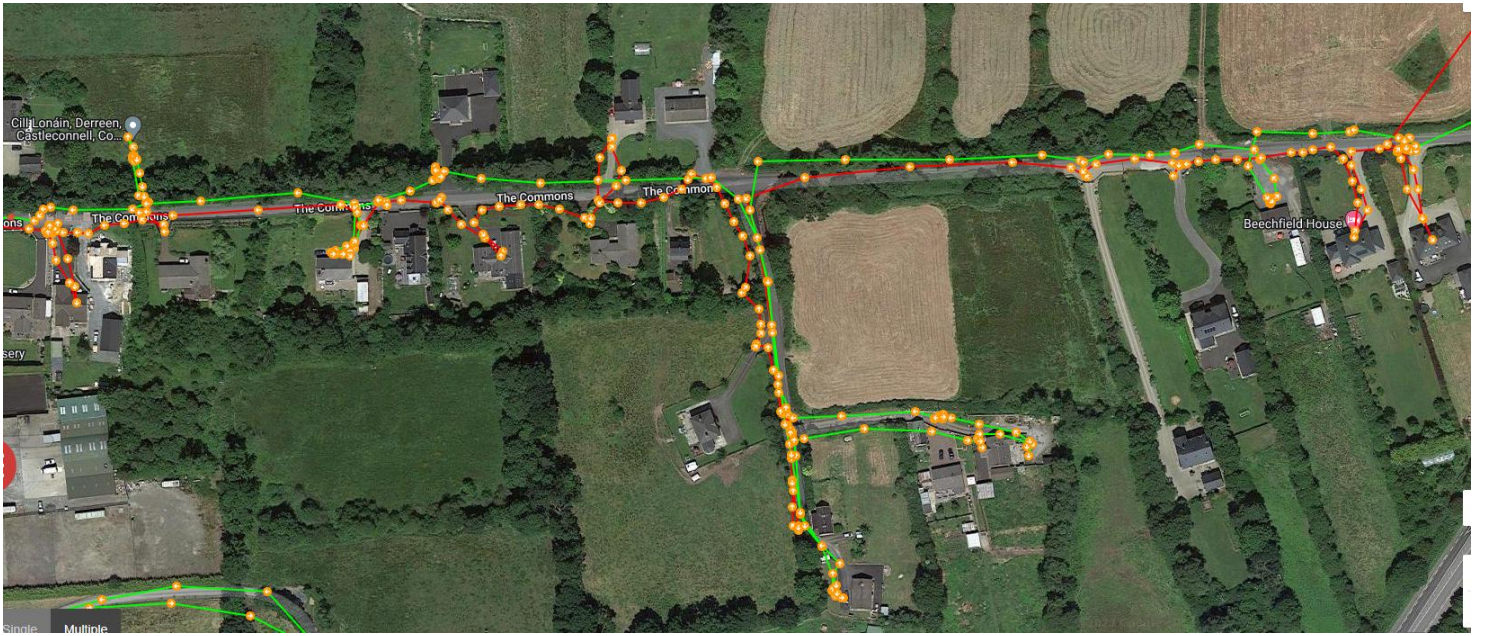
Order Completion Report

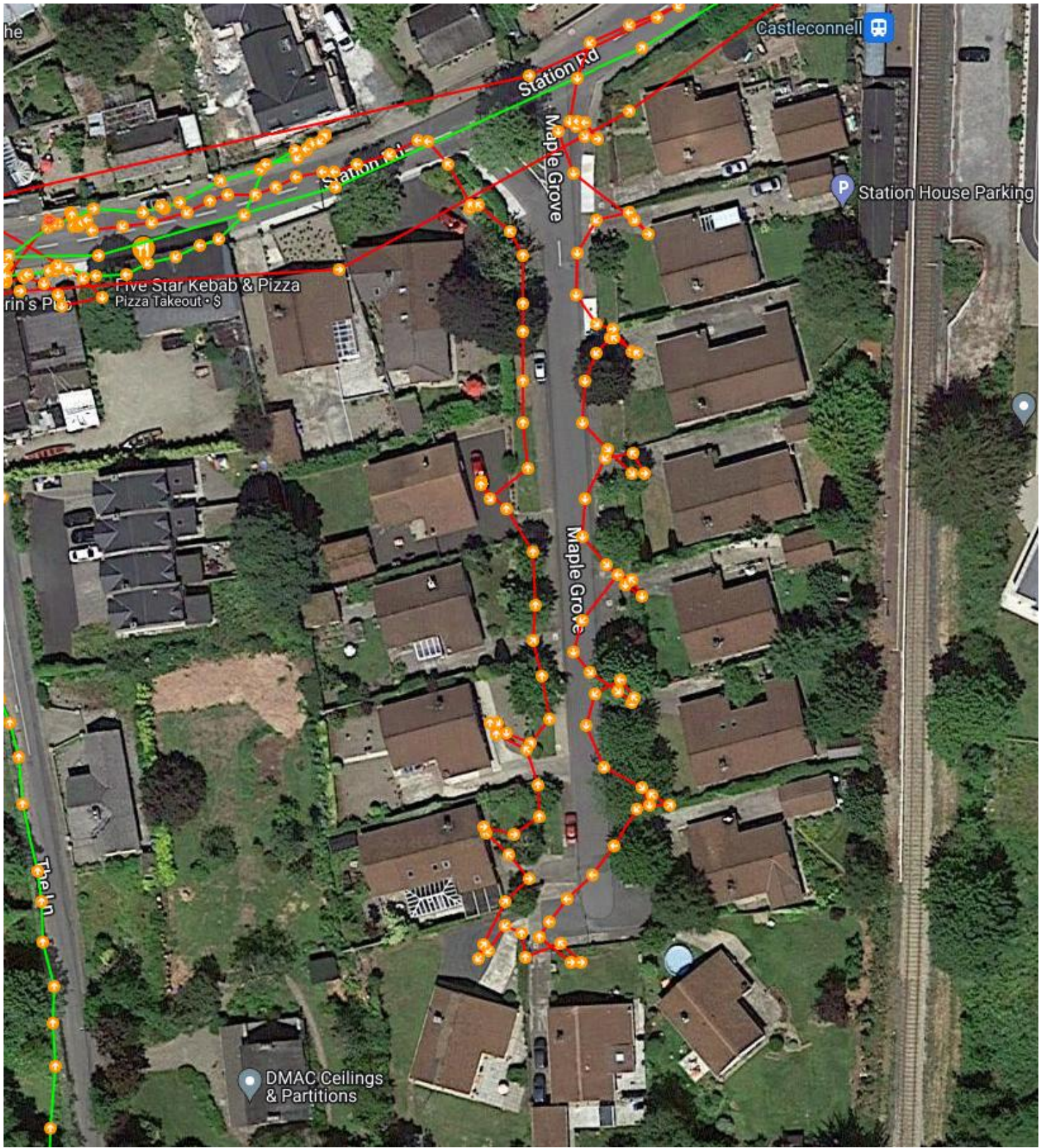
Order No.: 010290
Map Status: Paid

Map Number: Castleconnell
Map Name: Castleconnell

Maps Leaflet Distribution Tracking Report

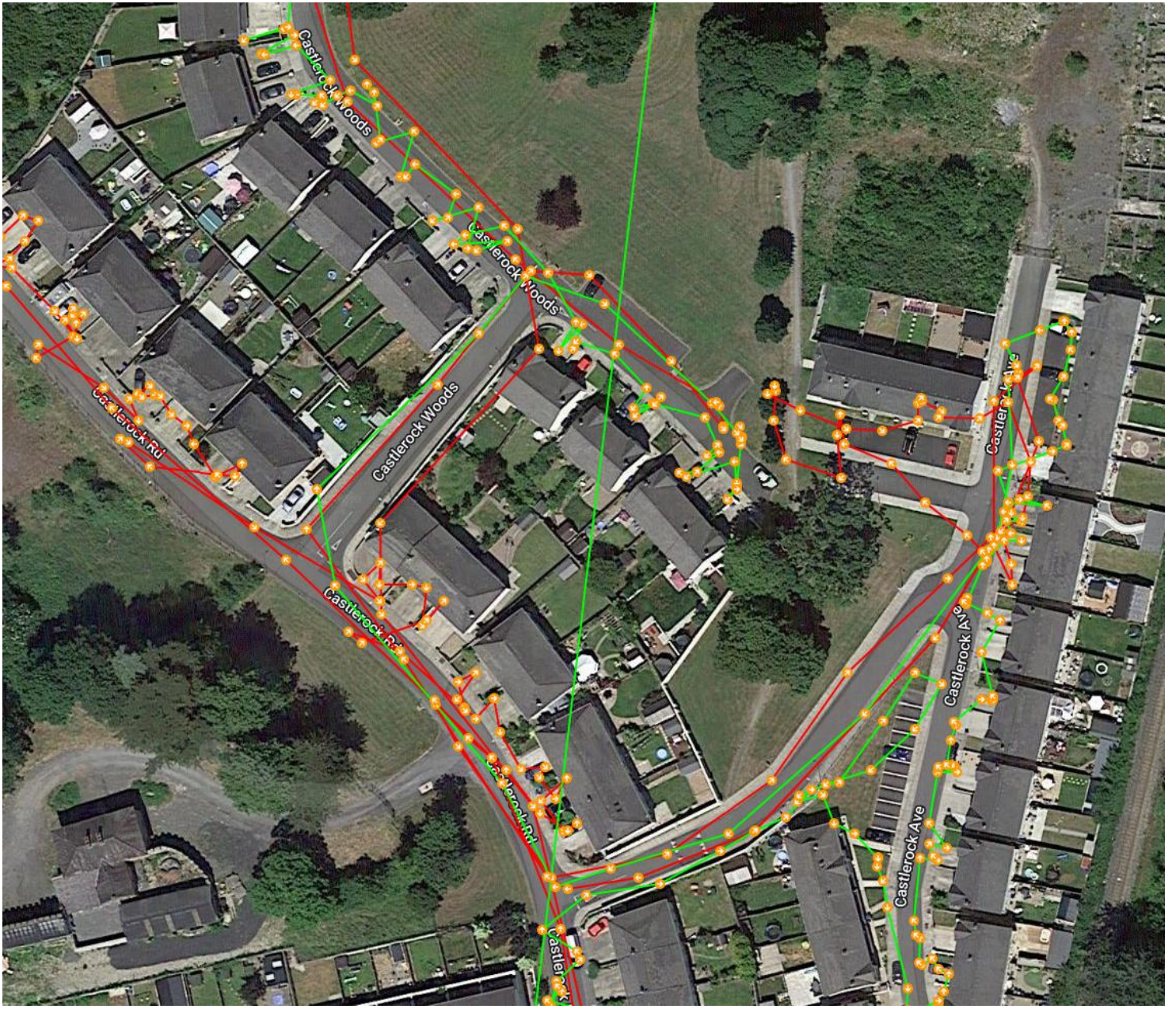




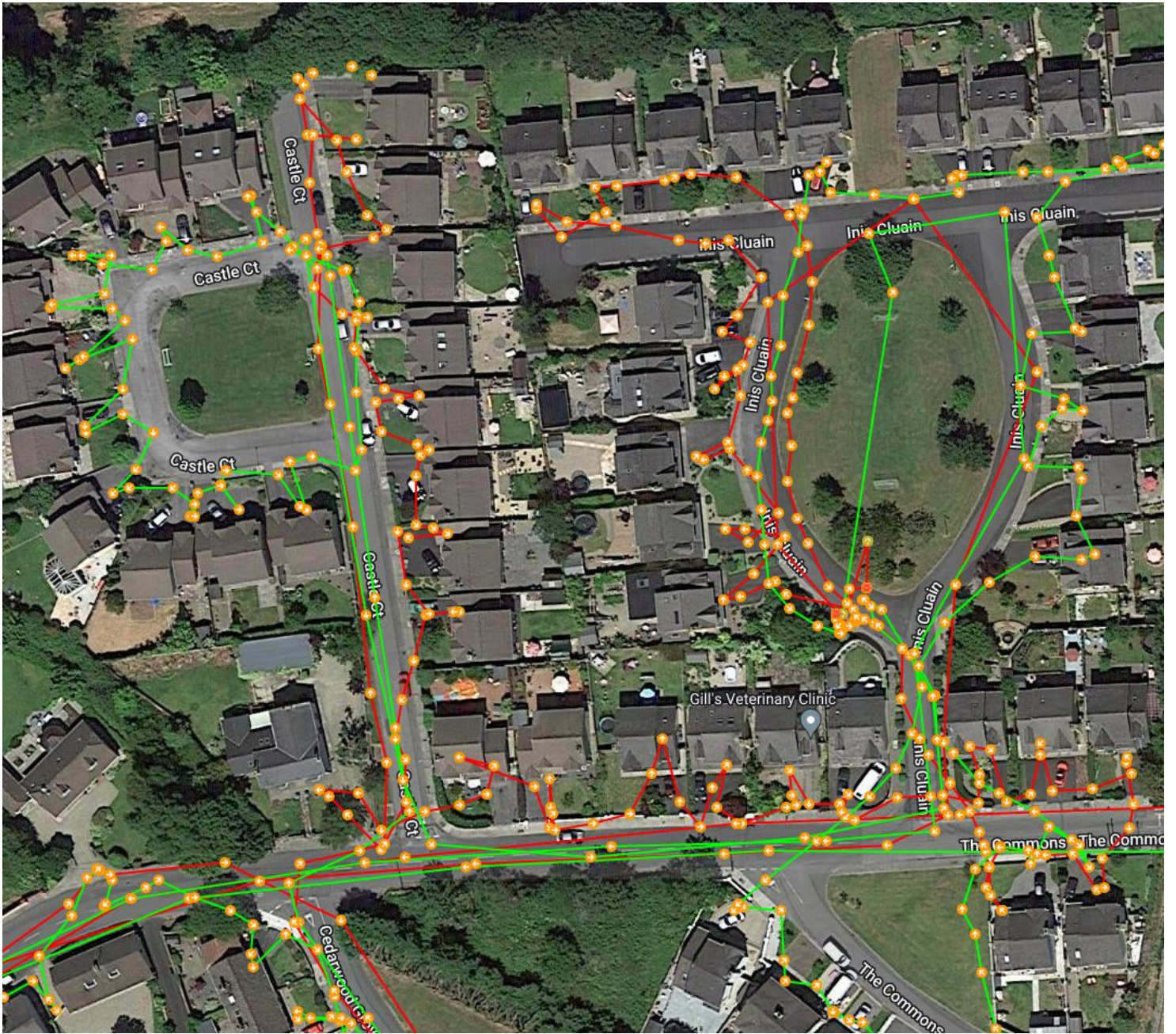


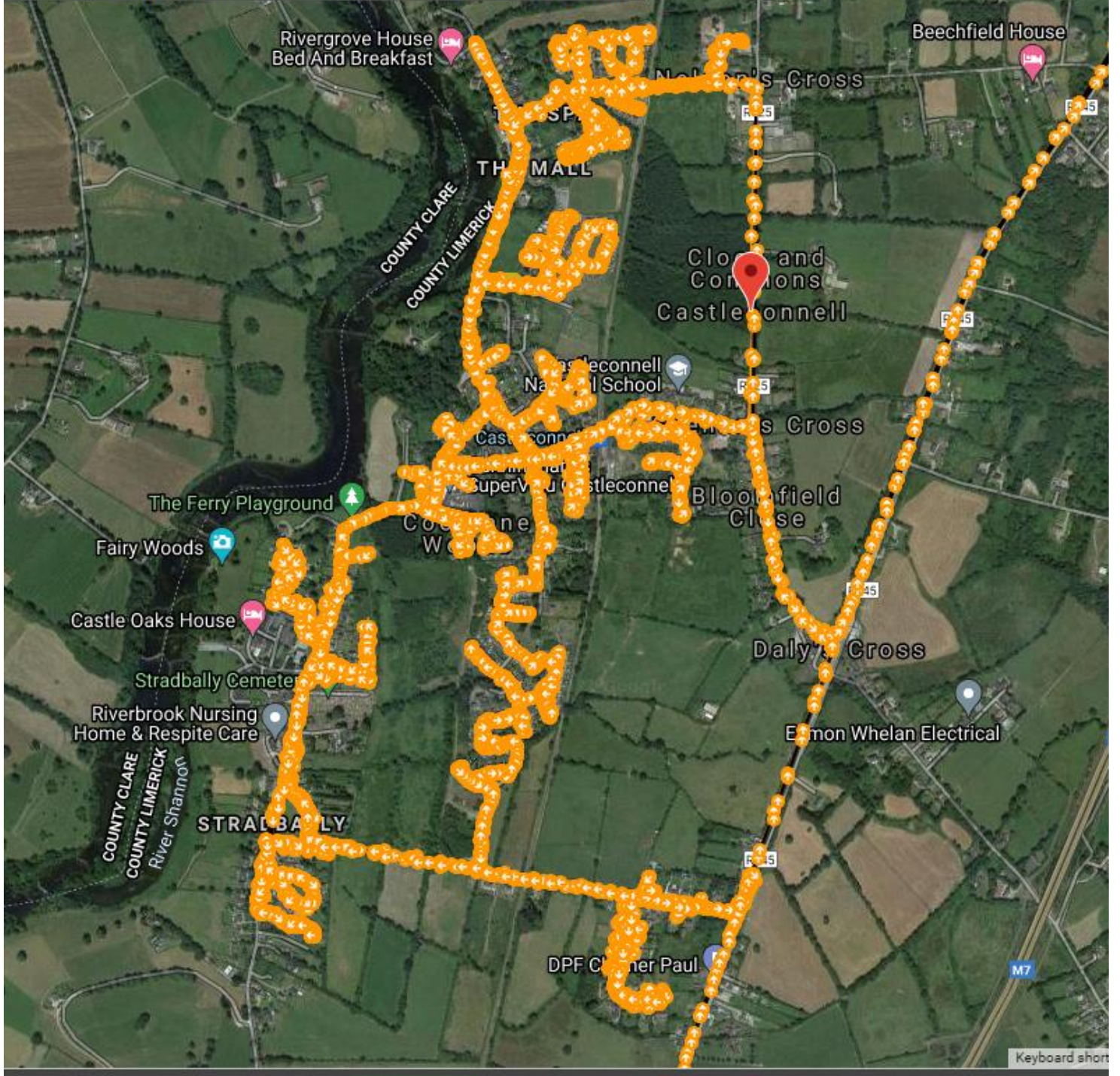












Offices at:
Dublin
Cork
Castlebar

Offices at
Bucharest
Dublin
Limerick

Registered Office
Classon House
Dundrum Business
Dundrum Rd
Dublin 14
Ireland

Registered Office
24 Grove Island
Corbally
Limerick
Ireland

+353(0)1 4851400
info@jbbarry.ie
<http://www.jbbarry.ie>
Follow us:  

+353(0)61 345463
info@jbaconsulting.ie
www.jbaconsulting.ie
Follow us:  

JB Barry & Partners
Consulting Engineers

JBA Consulting Engineers
and Scientists Limited

Registration number:
121649

Registration number
444752

JBB Group Ltd is certified
to:
ISO 9001:2015
ISO 14001:2015
OHSAS 18001:2007

JBA Group Ltd is certified
to:
ISO 9001:2015
ISO 14001:2015
OHSAS 18001:2007

